



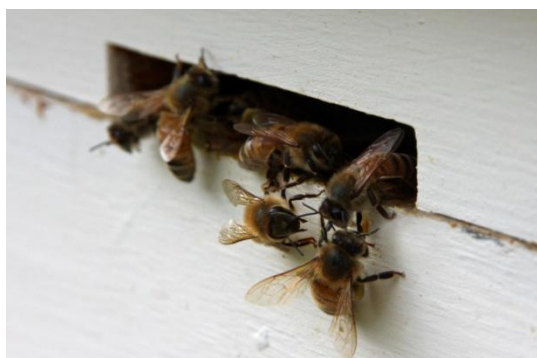
Northwest New Jersey Beekeepers Association Newsletter

Spring 2010

Northwest New Jersey Beekeepers Association,
Scott Horsnall - President
C/O Barbara Hill - Sec'y, PO Box 379, Ringoes, New Jersey 08551

INSIDE THIS ISSUE

- 1 Letter from the President
- 2 Seasonal Management
- 3 Seasonal Management Cont'd. & Nubeeks Update
- 4 Bee-Ginner s - The Next Generation/s
- 5 NWNJBA Calendar
- 6 Fair Volunteers - Lottery - T-shirts



*March Bees
Enjoying an upper
entrance and some nice
55+ degree
flying weather*

PRESIDENT'S MESSAGE:

Hello fellow beekeepers,
Finally spring has arrived and we can start back to tending to the bees. Hopefully everybody had a busy winter season building equipment in preparation of the arrival of packages, nucs, making splits, or catching a swarm or two. In addition, hope you found some time to do a little reading whether a book or a periodical.

If you do not subscribe to one of the bee magazines I would suggest you sign up, it is a great way to stay current with beekeeping and likely give you some ideas that you may want to implement in your own apiary.

As we move thru the spring build up and thru the honey flow, please feel free to contact any of the officers if you should have questions regarding your bees, and if we do not know we will put you in contact with someone who can help.

We are planning to have a Branch meeting on April 24th at Echo Hill. In addition additional branch meetings and events (Warren and Hunterdon County fairs) are provided in the branch calendar.

Good luck to everyone for the 2010 season and hope to see you at the next branch meeting.

Scott Horsnall
President



Our Holiday Party



A great time to kick back, relax and enjoy the company of other beekeepers.....We enjoyed a great menu .and as a special surprise Santa found time in his busy schedule to drop by. Karin had us all vote on the colors for our "Give Bees a Chance" sweat and T-shirts and we took part in a chinese auction. Many thanks to all who made the auction a success by either donating an item or by purchasing tickets... with many thanks to all of our volunteers who through their efforts at the Fairs and throughout the year make our Holiday Party possible.

*"A Special Thanks to
our Treasurer
Karin Weinberg for
putting it all together"*

Seasonal Management - Tips & Reminders

Spring Management

Beekeeping is a year round process. Management applied today will affect the colony months later. Winter preparation in the fall will determine the condition of colonies in the spring, while spring manipulation will affect colony performance during the summer season. Management should therefore not only meet current colony needs but also include its seasonal requirements.

Spring management actually began on a mild day in mid winter. The lid is lifted to check whether the colony is alive. If the colony has died, the equipment is removed and stored. If the colony was alive, you determined that there was sufficient food accessible to the bees. Cold weather may prevent the cluster from moving to stored food only one frame away, resulting in starvation. In such situation, the empty frames were exchanged with several frames containing honey and some pollen. Before inserting these frames, you pre-warmed them to room temperature. Were there no food reserves in the hive, you placed granulated sugar or fondant on top of the inner cover as emergency food. To prevent food shortage and starvation in early spring, you have calculated or fed up to 70 pounds of sugar syrup or honey reserves in the fall. By early March most colonies have begun brood rearing. Early brood is important as the colony needs to replace its wintered adult bee population. On a mild day, (over 55 degrees) a single frame from the centre of the cluster can be carefully removed and checked for brood, honey and pollen. If brood is absent, spotty or showing raised cappings, one of the following problems may exist:

1. a queenless colony
2. a defective queen (e.g. drone layer)
3. lack of pollen
4. presence of brood disease
5. presence of parasitic mites



*Junabea Faith Horsnall
with Santa*

Seasonal Management Tips & Reminders Cont'd.

Queenless colonies, or those with a failing queen, should be united with a strong colony or requeened. Pollen is the bee's dietary source of protein and without it no brood can be raised. Combs of pollen should be placed directly beside the brood as bees will not cross an empty comb to get it. Should there be insufficient pollen in the hive, a pollen patty, pollen supplement or pollen substitute should be provided.

During spring inspection, clean the bottom board. Dead bees, debris and moisture often accumulate during winter, sometimes blocking the entrance. Debris removal requires a lot of energy from the bees.

Spring Feeding

The main purposes of spring feeding are:

1. provide food stores for the cluster 2. increase pollen reserves to stimulate egg laying and replace wintered bees 3. provide a method of medication for the prevention of bee diseases (when necessary).

Mix one part water with one part sugar by weight. One teaspoon of antibiotic may be added to each gallon of syrup. Fumidil B may be added to the first gallon of syrup fed to a colony in the spring for control of Nosema. Do not add medication to hot syrup but wait until it is lukewarm.

Entrance Reducers - Entrance reducers help to prevent robbing during dearth periods. As regular flight begins in late March or early April, entrance reducers should be placed on smaller colonies. This enables the small colony to guard against robbing. Colonies killed in winter - A number of colonies die each winter as a result of winter severity, colony weakness, disease, pests, etc. It is helpful to determine the cause of death so that surviving colonies will not be affected in case a disease is present.

Requeen or Not Requeen

To select a colony for requeening, several factors need to be considered including last year's performance, overall temperament and age of the queen. Requeening can be done annually or every second year. Older queens often experience declines in egg-laying and may become drone layers, produce poor brood patterns or may suddenly be superseded.

In early spring, only imported queens can be used, as locally produced stock will not be available until the first or second week in May. Instead of applying a management program that depends on the availability of queens in early spring, one could also requeen in July or early August when high quality queens can be produced locally or purchased at lower prices. At that time, requeening will cause minimal disruption to brood rearing. However, requeening at the height of season is not attractive to many beekeepers because it impacts honey production. Alternatively, wintered colonies can be stimulated in the spring to increase population so that Splits/Nucs can be made when queens become readily available. Making Splits and Nucs will be discussed at one of our next meetings. Hive body reversal will be discussed on April 24th.



Northwest Bee-Ginner Updates - Roger Gares

Update from last years nubee. I had a lot of ups and downs last yr and gained alot of experience. Now I'm not saying I'm a pro yet although I've had experience with installing a package, putting a swarm in a hive, waxmoths. hive beetles, swarming, mites, a hive went queenless, doing a trapout, burned a hive because of foul brood and had a 70% loss. WOW that's a lot of experience for a first yr. I'm ready to start a new yr. The trapout is going strong bringing in pollen, topbar seems lil weak but working. I made some new equipment, foundationless frames, drone brood culling frames and a long hive. I have splits and carniolan queens ordered. I'll keep you posted on our Yahoo Group site , if you haven't signed on your missing out.

<http://pets.groups.yahoo.com/group/northwestnewjerseybeekeepers>

BEE Well Roger



Northwest Bee-Ginner Updates - Our Future



*Roger Gares'
beekeeper - grandson
Kyle Hessington*

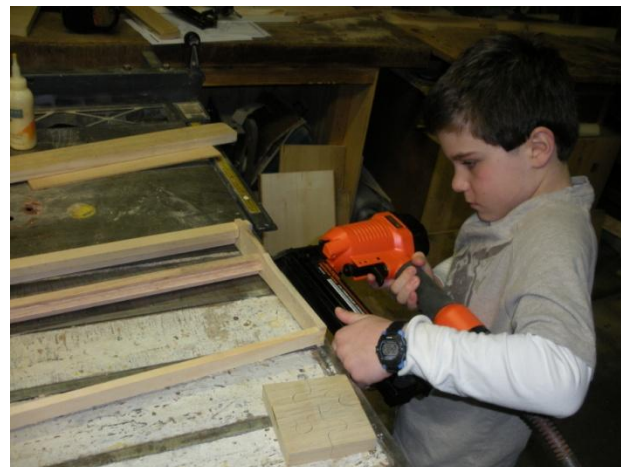
This is my grandson Kyle Hessington, he's from Cape May so I don't see him as often as I'd like. Last spring he was up for a week and while he was here he helped me re-hive a colony that was in some old rotted abandoned hives. He really enjoyed giving the bees a new home. He has helped me at other times checking hives at the vineyard and in my wood shop making equipment. We're sorry to say we had to destroy the re-hive because of AFB but that hasn't deterred him.

When I wrote an e-mail to him this spring, that the 2 hives I had left were bringing in pollen, and I wrote; "bringing in pollen means brood and brood means more bees" he replied "*more bees means you can split and bring a hive down to me*".

LOL Roger



*Al Tomaro's beekeeper
son - Quinn
shown here in
Roger Gares' shop
"Quinn attends most
NWNJBA meetings
with Dad.*





" Sean my five year old foster son has been helping with the bees --- his hero is Dr Keith Delaplane - he has watched the videos a few times - the first time I took him to the hive in Ringoes he asked me if we were at Dr. Delaplane's farm and when I said no he wanted to know if we could drive to see him". *Scott Horsnall*

Scott Horsnall's five year-old beekeeper foster son Sean with Sean's brother Robbie

Northwest NJBA Calendar

UPCOMING MEETINGS & DATES TO REMEMBER

Spring Meeting

Location Echo Hill Outdoors - April 24th from 11am - 2pm >
 Subject - Installation of Packages & Nucs - Swarm control - Reversal of Colony
 Deeps & Mediums & A chance to ask questions of the experts!
RSVP if you plan to attend to the NWNJBA Sec'y, Muscavaya@aol.com

Summer Meeting

June 26th
 Location Echo Hill
 Subject - Feeding - Medications and other details to follow

Fall Meeting

September 18th
 Fall - Winter Prep - Hands on at the Old York Cellars Vineyard
 More details to follow - Summer and Fall meeting dates are relative to weather.

WARREN COUNTY Farmers FAIR - 2010

Sunday August 1st thru Saturday August 7th

HUNTERDON COUNTY 4H FAIR - 2010

Wednesday August 25th thru Sunday August 29th

HOLIDAY PARTY Tentative Date for December 11th, Echo Hill



A CALL FOR VOLUNTEERS

This is a perfect time members, to think about your availability and plan a schedule to help at our fairs. They are the primary source of income for our Association.

A sign-up sheet will be available at the next few meetings. Without your help, there would be less public education and outreach related to the honeybee... and the Fairs make our holiday party possible. so plan to sign up to help at the Fairs. Fair Chairmen: Karin Weinberg - Warren Cty and Stan Wasitowski - Hunterdon Cty.

NWNJBA MISCELLANEOUS

OUR LOTTERY

A two deep, hive setup with frames and foundation, an inner and outer cover and screened bottom board...WITH BEES!

If you have not already purchased your ticket/s @ (\$10.00 per ticket), the next meeting is your last chance to participate in the lottery for this year.

T-SHIRTS AND SWEATSHIRTS WITH

"Give Bees a Chance" Logo

Will be offered for sale at all NWNJBA meetings

PLEASE VISIT THE NWNJBA YAHOO GROUP started by ROGER GARES

Please join <http://pets.groups.yahoo.com/group/northwestnewjerseybeekeepers/>

This is our group, a way to keep in touch with local beekeepers .

Ask advice or give it.

A SPECIAL NOTE TO OUR SNAIL MAIL RECIPIENTS

Please contact the NWNJBA Sec'y Muscavaya@aol.com with an e-mail address if you have one...Save a tree and printing & mailing costs for your Association.... and Thanks!

NORTHWEST BRANCH OFFICERS

SCOTT HORSNAL - President Ph: 609 397-5475
 CHARLES ILSLEY - 1st VP Ph: 732 469-0043
 BRYAN MILLER - 2nd VP Ph: 908 236 7157
 JOHN PETERSON - 3rd VP Ph: 908 638-8224
 KARIN WEINBERG - Treasurer Ph: 908 479-1564
 BARBARA HILL - Secretary Ph: 609 466-9428
 HELENE MARIE PAPPAS - Librarian

e-mail: SLHORSNALL@mactec.com
 e-mail: c.ilsley@verizon.net
 e-mail: millsprecision@verizon.net
 e-mail: jphoneyfarm@yahoo.com
 e-mail: metricom@patmedia.net
 e-mail: muscavaya@aol.com
 e-mail: helenemariePaPPas@gmail.com